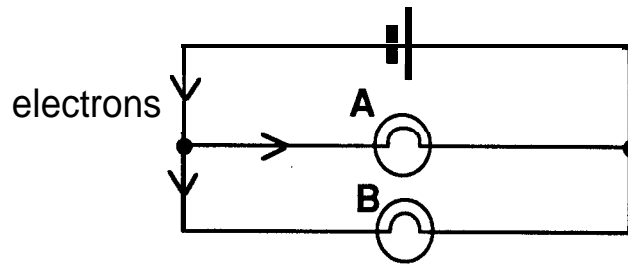


Homework 35c In parallel

1. Copy the circuit diagram shown below.

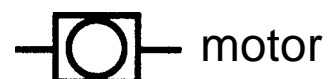


Use the words in the HELP-BOX to copy and complete the paragraph below.

light	parallel
two	electrons

The circuit diagram shows two bulbs and a cell connected in When flow from the cell some go through bulb A and others flow through bulb B. If one amp flows through each bulb then amps flow from the cell. If one bulb breaks the other one will continue to

2. Redraw the circuit diagram of Question 1 to include a switch to control bulb A but which does not affect bulb B.
3. Are the light bulbs in your home connected in series or parallel? [Hint: think about what happens to the other lamps when one bulb fails and has to be replaced.]
4. Draw a circuit diagram which includes a battery, two lamps, a switch and an electric motor. The circuit must be designed to work as described below.



One lamp must stay lit all the time.

The other lamp must only light when the motor is running.

The switch must act as the on/off control for the motor.